

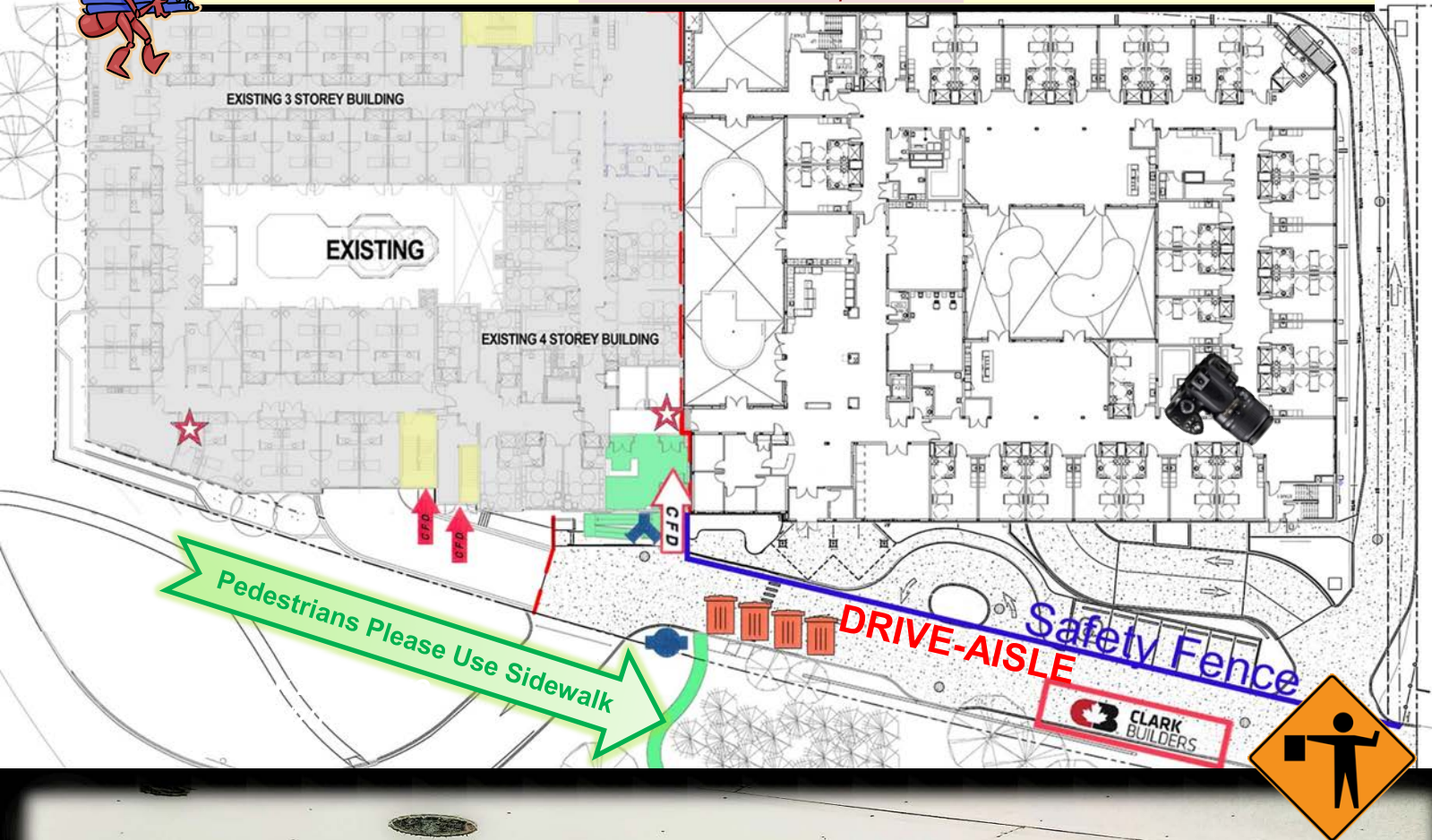
# Brentwood Care Centre PHASE-3 IMPACT CALENDAR for May 6 – 19 / 2018

Sun	Monday	Tuesday	Wednesday	Thursday	Friday	Sat
May 6 Wk 109	May-7 <i>CRS</i> Phase-3 IT Room Server Install	May-8 <i>CRS</i>	May-9 <i>CRS</i>	May-10 <i>CRS</i>	May-11 <i>CRS</i>	May-12 Phase-1 Com Room Clean-Up
<p>➤ <b>CANADIANA DR RETURNED TO OPERATIONS THIS WEEK</b></p> <p>➤ 1<sup>st</sup>, 2<sup>nd</sup>, 3<sup>rd</sup>, 4<sup>th</sup> Floor Resident Room Finishes ➤ Basement Finishes</p> <p>➤ 1<sup>st</sup>, 2<sup>nd</sup>, 3<sup>rd</sup>, 4<sup>th</sup>, 5<sup>th</sup> Floors Drywalling ➤ Exterior Finishes</p>						
May 13 Wk 110	May-14 <i>CRS</i>	May-15 <i>CRS</i>	May-16 <i>CRS</i>	May-17 <i>CRS</i>	May-18 <i>CRS</i>	May-19
<p>➤ 1<sup>st</sup>, 2<sup>nd</sup>, 3<sup>rd</sup>, 4<sup>th</sup> Floor Resident Room Finishes ➤ Basement Finishes</p> <p>➤ 1<sup>st</sup>, 2<sup>nd</sup>, 3<sup>rd</sup>, 4<sup>th</sup>, 5<sup>th</sup> Floors Drywalling ➤ Exterior Finishes</p>						



## IMPACT EVENTS

- P* Parkade Access Disruptions
- A* Building Access interruptions
- C* Construction Activity
- R* Resident Area Disruptions
- S* Staff Area Disruptions
- E* Planned Power Shut Down
- W* Planned Water Shut Down
- N* Excess Noise



**May-1**  
**the BRAGG CREEK LOUNGE (1F NW Corner) taking shape**