

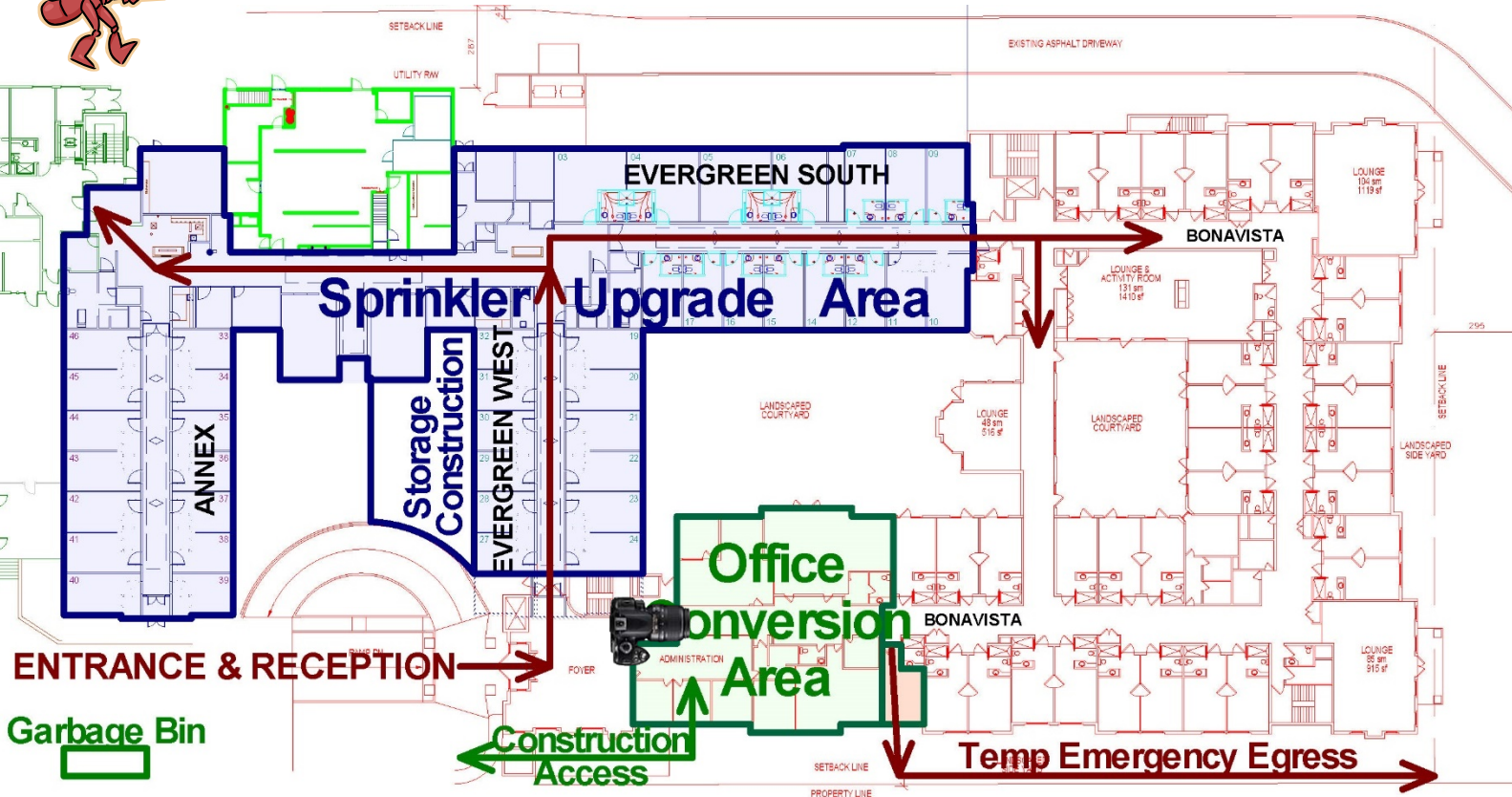
Southwood Care Centre Office Conversion & Sprinkler Upgrade IMPACT CALENDAR for Nov 12 – 25

Sun	Monday	Tuesday	Wednesday	Thursday	Friday	Sat
Nov-12 W k 24	Nov-13 <i>R,S</i>	Nov-14 <i>R,S</i>	Nov-15 <i>R,S</i>	Nov-16 <i>R,S</i>	Nov-17 <i>R,S</i>	Nov-18
	<ul style="list-style-type: none"> ➤ RESIDENT RMS – Painting, Wall Covering, Flooring, Millwork, Barn Doors, Washroom Fixtures ➤ CORRIDOR – Drywalling, Prime/Finish Painting, Wall Covering ➤ Finish Exposed Piping Sprinkler Head Installs ➤ Sprinkler Pressure Testing 					
Nov-19 W k 25	Nov-20 <i>R,S</i>	Nov-21 <i>R,S</i>	Nov-22 <i>R,S</i>	Nov-23 <i>R,S</i>	Nov-24 <i>R,S</i>	Nov-25
	<ul style="list-style-type: none"> ➤ RESIDENT RMS – Millwork, Res Rm Doors, Plumbing/Electrical Fixtures, Ceiling Lifts, Accessories ➤ CORRIDOR – Painting, Flooring, Wall Covering/Protection, Fixtures, Accessories ➤ Evergreen, Annex & Nurse Station Corridor/Adjoining Areas – Sprinkler Installation Wrap-Up 					



IMPACT EVENTS

- P* Parkade Access Disruptions
- S* Staff Area Disruptions
- A* Building Access Interruptions
- E* Planned Electrical Shut Down
- C* Construction Activity
- W* Planned Water Shut Down
- R* Resident Area Disruptions
- N* Excess Noise



Nov-9, Corridor Drywalling

