


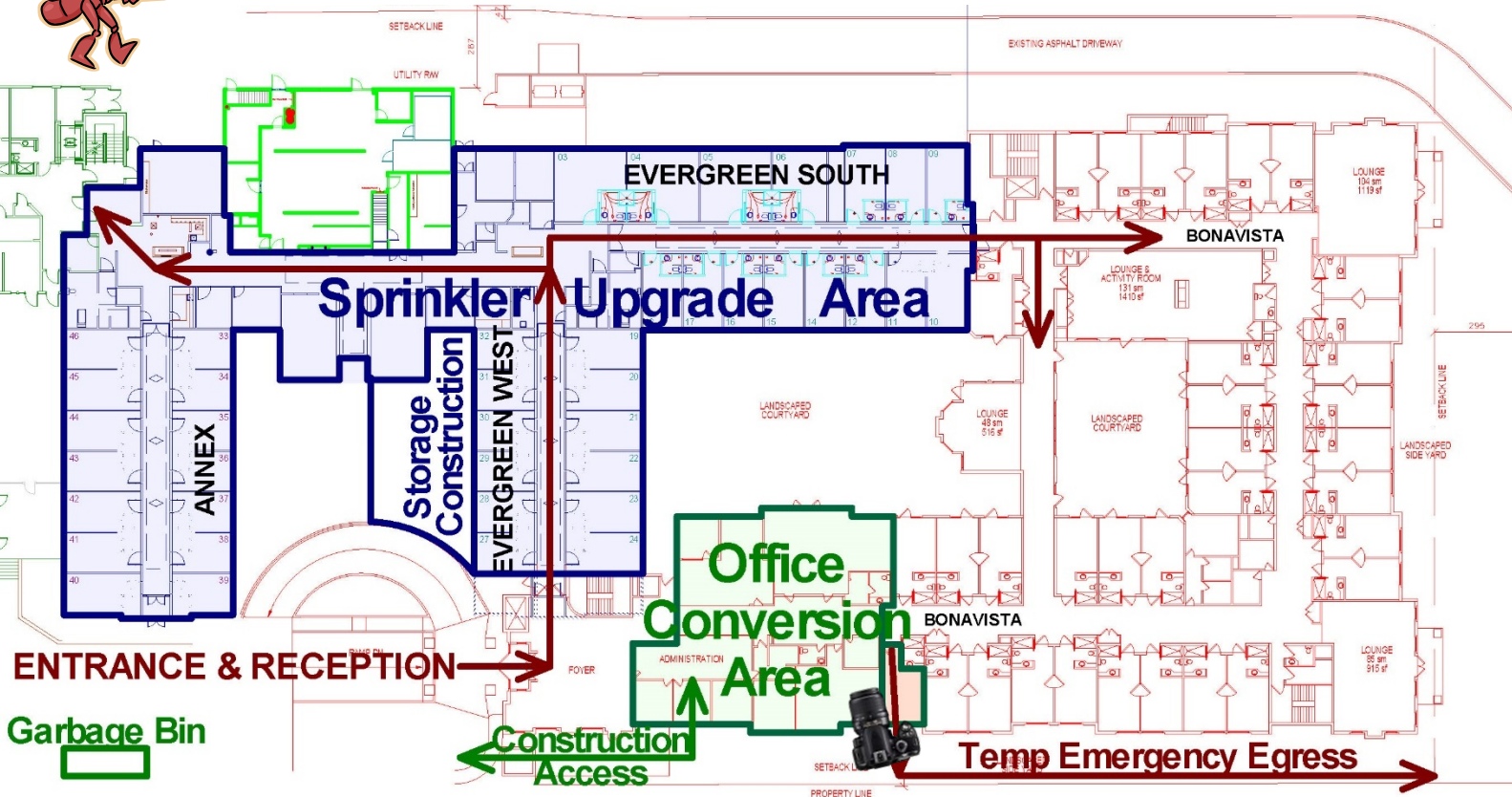
# Southwood Care Centre Office Conversion & Sprinkler Upgrade IMPACT CALENDAR for Oct 8 – Oct 21

Sun	Monday	Tuesday	Wednesday	Thursday	Friday	Sat
Oct-8 W k 19	Oct-9 <i>R,S</i> 	Oct-10 <i>R,S</i>	Oct-11 <i>R,S</i>	Oct-12 <i>R,S</i>	Oct-13 <i>R,S</i>	Oct-14
<p>➤ Drywalling ➤ Mechanical &amp; Electrical Rough-Ins ➤ Evergreen – Sprinkler Head Installations ➤ Annex – Sprinkler Pipe/Head Installations ➤ Nurse Stations Corridor &amp; Adjoining Rms – Sprinkler Pipe Installations</p>						
Oct-15 W k 20	Oct-16 <i>R,S</i>	Oct-17 <i>R,S</i>	Oct-18 <i>R,S</i>	Oct-19 <i>R,S</i>	Oct-20 <i>R,S</i>	Oct-21
<p>➤ Drywalling ➤ Mechanical &amp; Electrical Rough-In Completions ➤ Evergreen – Sprinkler Head Installations ➤ Annex – Sprinkler Head Installations ➤ Nurse Stations Corridor &amp; Adjoining Rms – Sprinkler Pipe/Head Installations</p>						



## IMPACT EVENTS

- P* Parkade Access Disruptions
- A* Building Access Interruptions
- C* Construction Activity
- R* Resident Area Disruptions
- S* Staff Area Disruptions
- E* Planned Electrical Shut Down
- W* Planned Water Shut Down
- N* Excess Noise



Oct-5, boarding the ceilings