

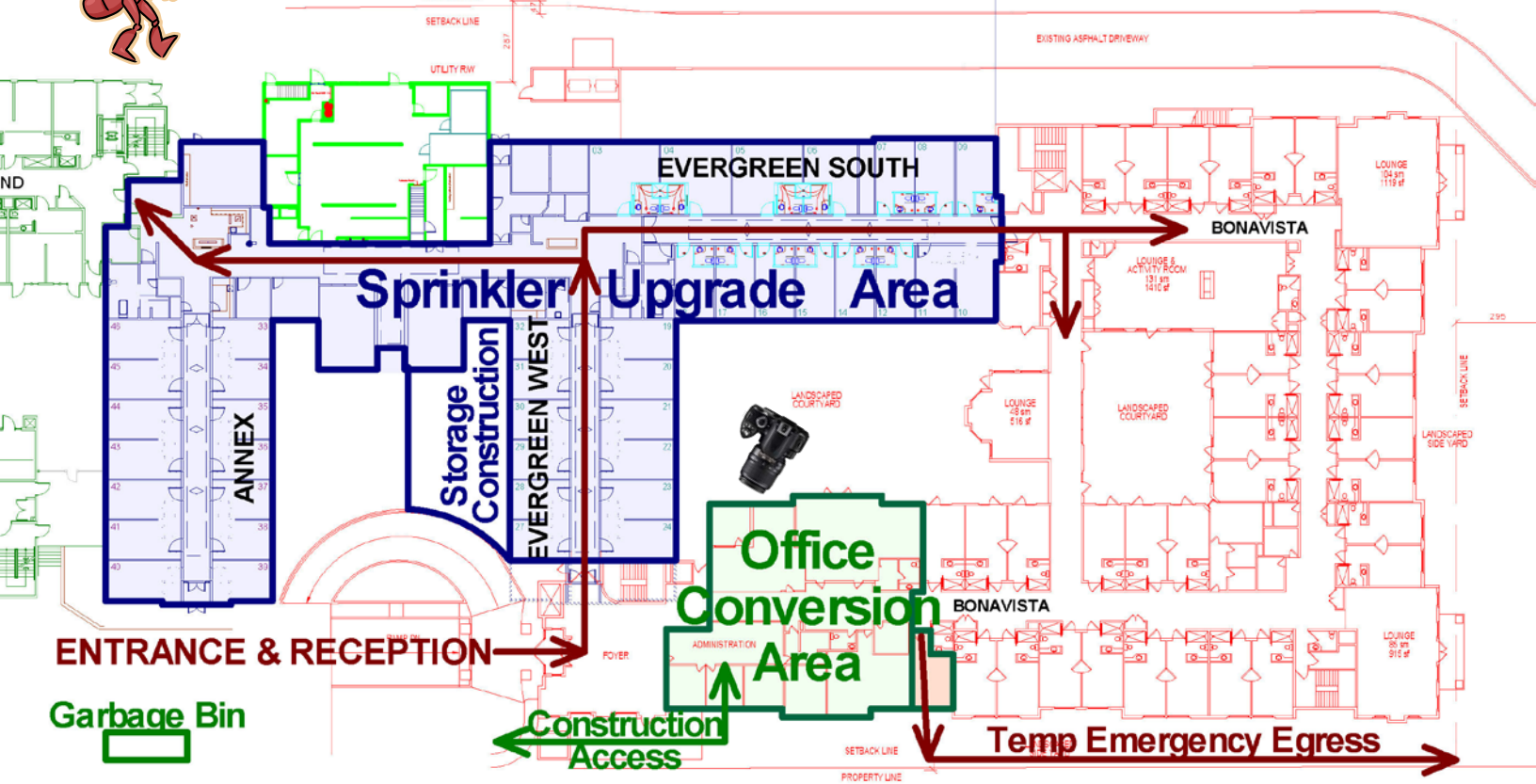
Southwood Care Centre Office Conversion & Sprinkler Upgrade IMPACT CALENDAR for Sept 3 – 16

Sun	Monday	Tuesday	Wednesday	Thursday	Friday	Sat
Sept-3 W k 14	Sept-4 <i>R,S</i> LABOR DAY	Sept-5 <i>R,S</i>	Sept-6 <i>R,S</i>	Sept-7 <i>R,S</i>	Sept-8 <i>R,S</i>	Sept-9
➤ Drywall Starts ➤ Mechanical & Electrical Rough-Ins ➤ Wall Framing & Beam Installations ➤ Evergreen West-Wing Attic Sprinkler Installations ➤ Common & Staff Area Sprinkler Layouts						
Sept-10 W k 15	Sept-11 <i>R,S</i>	Sept-12 <i>R,S</i>	Sept-13 <i>R,S</i>	Sept-14 <i>R,S</i>	Sept-15 <i>R,S</i>	Sept-16
➤ Drywalling ➤ Mechanical & Electrical Rough-Ins ➤ Wall Framing & Beam Installations ➤ Sprinkler Layouts & Installations – Locations Yet To Be Finalized						



IMPACT EVENTS

- | | |
|--|--|
| <p><i>P</i> Parkade Access Disruptions</p> <p><i>A</i> Building Access Interruptions</p> <p><i>C</i> Construction Activity</p> <p><i>R</i> Resident Area Disruptions</p> | <p><i>S</i> Staff Area Disruptions</p> <p><i>E</i> Planned Electrical Shut Down</p> <p><i>W</i> Planned Water Shut Down</p> <p><i>N</i> Excess Noise</p> |
|--|--|



**August-31
New Masonry Finish**